



GXT2U 700-1000-1500-2000-3000VA

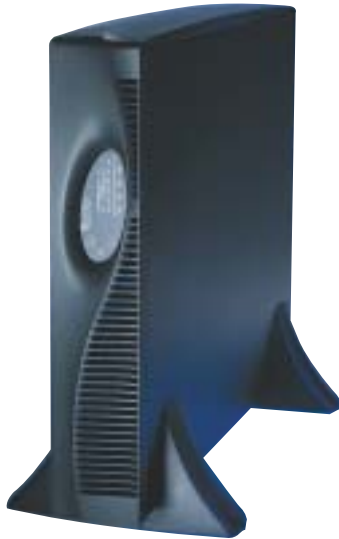
UNINTERRUPTIBLE POWER SUPPLY



NEW

GXT2U

Uninterruptible Power Supply



A high-performance on-line UPS with proven reliability, custom configurability, and internal batteries all in a compact 2U design.

The Liebert GXT 2U UPS system takes the outstanding features and unmatched reliability of Liebert's UPStation GXT series - and puts it all into a smaller 2U height cabinet. As a true on-line UPS, GXT 2U provides power factor correction, internal batteries, frequency conversion, unlimited external battery connectability, and internal automatic and manual bypass capability.

The Liebert GXT 2U is designed with the features needed to protect mission-critical equipment from all power problems: (Sags, Surges, spikes, Outages, Noise, Frequency Variations and Waveform Distortion).

The New Shape Of Maximum Network Power Protection

Applications

- LAN and WAN servers
- Clustered network equipment: hubs, routers, bridges
- Remote telecommunications units
- Office Telecommunications systems
- Voicemail and e-mail servers
- Test and diagnostic equipment
- Engineering network servers
- Factory floor protection of micro processor-controlled equipment
- Mission critical devices

Key Benefits

- True on-line design
- Operational as rack or tower
- Only 2U high up to 3000 VA (including battery)
- Highly increased back-up time
- Compatible with Liebert's Multilink Software (included)
- Compatible with Intellislot SNMP WEB Card
- Output parameters and alarms user configurable
- External Plug and Play, 2U battery cabinets available
- Hot swappable batteries
- Wide input voltage window
- Attractive design



The Right Features In Just The Right Size

On-line design means zero transfer time from external to internal power. When utility power fails, your critical load remains supported by a seamless flow of power from the GXT 2U.

For maximum control, the GXT 2U is custom configurable to your needs using a specially designed Windows software package. Offered in 700, 1000, 1500, 2000 and 3000 VA capacities, the GXT2U also provides easy serviceability with user replaceable batteries. And all this is available in one of the most affordable UPS systems in its class.

Quality Power

The Liebert GXT 2U is a true on-line power source, so whatever the quality of power coming in - the pure sinewave output meets the exacting standards of your equipment. Unlike other UPS technologies, the GXT 2U's design handles all these potential power problems:

- Power spikes and transients
- EMI/RFI noise
- Voltage sags and brownout conditions
- Harmonics
- Power-factor corrected loads
- Outages

Built-In Reliability

The GXT 2U is designed from the inside out for maximum reliability. It includes operating features that simply are not available on other units in its price range:

Power-factor corrected loads - the GXT 2U maintains stable voltage output even with the power-factor corrected loads typical of modern computer equipment.

Frequency conversion - allows 60Hz input/50Hz output or 50Hz input/60Hz output with no derating.

Unlimited external battery connectability - any number of 2U battery cabinets can be added to supply additional battery time.

Internal automatic and manual bypass capability - assures continuity of power to critical loads during system problems or maintenance.



Sophisticated Protection In An Easy-To-Use Package

The GXT 2U is easy to install...easy to set up...and even easier to use. It features simple operation for uncomplicated, error-free operation. A front-mounted panel displays: system status, load levels, battery time remaining and any alarm conditions.

For maximum flexibility, the GXT 2U can be easily installed as a space-saving, rack-mounted unit or as a compact freestanding tower. This versatility allows it to be used to protect networks, servers, telecommunications equipment or industrial process equipment just about anywhere.

In order to fully protect your network, a UPS must be able to deal with different types of power input, including imperfect power from your electric utility, the variable output of most standby generators, and harmonics from inside the building or even from your own network equipment - or no input at all, providing power directly from the internal batteries (black start function). The Liebert GXT 2U is designed to handle all these situations. If a UPS can't provide proper protection under these conditions, then it isn't providing complete protection.

Up to 3kVA
in a 2U package



Rack Shelves, allow mounting of the UPS into telecom/relay racks. RS500 is designed to allow flush-mounting of the UPS into 19" wide telecom/relay (single mounting rail type) racks. RS600 is designed to allow centre mounting of the UPS into 19" wide telecom/relay (single mounting rail type) racks. RS700 is designed to allow flush mounting of the UPS into 24" wide telecom/relay (single mounting rail type) racks. The 800 is designed to allow centre mounting of the UPS into 24" wide telecom/relay (single mounting rail type) racks.

Rack Slides, two more rack slides are available for mounting of the UPS into standard rack enclosures. RS18-26 rack slides are adjustable from 18 to 26 inches - RS24 - 32 rack slides are adjustable from 24 to 32 inches.



Communications For Power Monitoring And Control



The GXT 2U offers a variety of communications options to provide the monitoring and control capabilities demanded by today's network computing systems.

Intellislot® SNMP/Web Card

For enhanced UPS communications and control, the Intellislot SNMP/Web Card will deliver SNMP and web-management communications capability to your GXT2U unit. This feature will provide flexibility in how you monitor and control your UPS over the network. The card is also easily configurable to work in a standard SNMP implementation and with Liebert's MultiLink unattended shutdown software.

MultiLink™ Shutdown Software

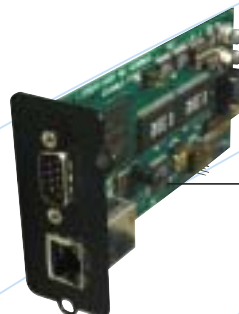
Your GXT 2U UPS system can be used with Liebert MultiLink shutdown software. This package automatically shuts down computer operating systems in a smooth and orderly manner if UPS battery capacity runs low.

MultiLink automated shutdown software performs the critical task of protecting information for one computer or a network. It is available in both single and multi-user versions and is designed to run on a wide variety of operating platforms. During an extended utility failure, MultiLink automatically shuts down computer operating systems in a smooth and orderly manner if UPS battery capacity runs low. MultiLink is designed to keep users informed. Notification about critical alarms can be sent to alphanumeric pagers or directly to the computer screen via pop-up messages. MultiLink may be configured for either in-band or out-of-band operation. Using the network to send alarm messages and data can dramatically reduce cable and installation costs. Alternatively, separate communications cables can be run to each computer when network wiring is a concern.



Automatic Responses for every UPS event may be customized

Configuration details appear in the bottom window pane when the event and response type are selected



SNMP/Web Card monitors a wide range of UPS information, allowing users to monitor, control, and manage their GXT 2U UPS over the network via the Web and SNMP.

The Solution That Gives You Exactly The Right Amount Of Protection And Support

The Foundation integration system is more than "just a rack" - it is the "foundation" of a mini-computer room. It is designed to deliver maximum flexibility today and to comprehensively accommodate future support needs in the rapidly changing network equipment environment.

It can start simply as a basic integration system to house and organize network components. Or you can specify it at any level of protection up to the self-contained Foundation Mini Computer Room (MCR) by adding support systems including computer-grade air conditioning, rackmounting UPSs, (like GXT2U or PowerSure InterActive), monitoring capabilities and security features.

The beauty of the system is that you don't have to do it all at once. These features can be incorporated from the beginning or added at a later time to help meet both your current and future requirements.

Evolving Design

The Foundation system provides an organized, secure, controlled environment for your sensitive electronic equipment. A few of the major improvements to the Foundation over previous enclosure designs are:

Foundation Enclosure

- Adjustable Rack Rails
- Reversible Hinged Door
- Improved Cable Management
- Easy Access Side Panels
- Multiple Door Options
- Complete Upgradability

Foundation (Mini Computer Room)

- Top or 19" Rackmounting ECM Air Conditioner
- Low Sound Levels
- Energy Saving Features



 Available in a variety of sizes

General Features

GXT2U RackTower models						GXT MiniTower models	
Model Number	GXT2-700RT230	GXT2-1000RT230	GXT2-1500RT230	GXT2-2000RT230	GXT2-3KRT230E	GXT700MT-230	GXT1000MT-230
Power rating VAW	700/490	1000/700	1500/1050	2000/1400	3000/2100	700/490	1000/700
Technology	On-Line					On-Line	
Input AC Parameters							
Voltage Range	230 VAC nominal, (119 to 280 VAC variable based upon output load)					230 VAC nominal, (119 to 280 VAC variable based upon output load)	
Frequency	40 - 70 Hz ; Auto Sensing					40 - 70 Hz ; Auto Sensing	
Output AC Parameters							
Voltage	200/208/220/230/240 (user configurable) VAC; ± 3%					200/208/220/230/240 (user configurable) VAC; ± 3%	
Frequency	50 Hz or 60 Hz (user configurable)					50 Hz or 60 Hz	
Wave form	Sinewave					Sinewave	
Battery Parameters							
Type	Valve-regulated, non spillable, flame retardant, lead acid					Valve-regulated, non spillable, flame retardant, lead acid	
Quantity x Voltage x Rating	4 x 12V x 7.0 x or 7.2 Ah		4 x 12V x 9.0 Ah		6 x 12V x 9.0 Ah	2 x 12V x 7 or 7.2 Ah	3 x 12V x 7 or 7.2 Ah
Hot swappable battery	yes					yes	
Battery Mfg/Part #	China Storage Battery / CSB FR 1270 F2						
Back up time							
Typical load	24 minutes	13 minutes	10 minutes	10 minutes	10 minutes	10 minutes	10 minutes
Half Load	44 minutes	25 minutes	20 minutes	14 minutes	16 minutes	18 minutes	18 minutes
Recharge Time	5 Hours To 95% capacity after full discharge info 100% load						
Connections							
Input sockets	EN 60320/C14			EN 60320/C20		EN 60320/C14	
Output sockets	(4) EN 60320/C13			(4) EN 60320/C13(1) EN 60320/C19		(4) EN 60320/C13	
DB9 Communication port	Yes (serial communication)					Yes (serial communication)	
Dimension and Weights							
Dimensions wxdxh (mm)	89 x 546 x 432			89 x 615 x 432		162 x 430 x 225	
Shipping Dimensions wxdxh (mm)	268 x 692 x 585					280 x 502 x 362	
Net Weight, Kg	22	23	23	25	34	13,1	
Gros Weight, Kg	27	27	27	28,4	35,4	15	
Operating Environment							
Operation temperature	0°C to +40°C (+32°F to +104°F)					0°C to +40°C (+32°F to +104°F)	
Storage Temperature	-15°C to +50°C (+5°F to +122°F)					-15°C to +50°C (+5°F to +122°F)	
Relative humidity	0% to 95%, non-condensing					0% to 95%, non-condensing	
Packaging							
N° of input cables included	please use the cable provided with your server				1 (16A)	please use the cable provided with your server	
N° of output cables included	2					2	
Multilink software CD	yes					yes	
Multilink communication cable	yes					yes	
User Configuration Kit	yes						
MiniTower Kit	yes						
Rack Mounting Handles	yes						
Rack mounting support rails	no (please look for details into this document)						
Standard warranty	2 years					2 years	
Warranty extention (1 or 3 years)	Available					Available	
Agency							
Safety	EN 50091-1-1, CE compliance mark, for both Low Voltage and EMC Directive					EN 50091-1-1, CE compliance mark, for both Low Voltage and EMC Directive	
RFI/EMI	EN 50091-2, Class					EN 50091-2, Class	
Surge Immunity	EN 61000 4-2, 4-3, 4-4, 4-5					EN 61000 4-2, 4-3, 4-4, 4-5	
Trasportation	ISTA Procedure 1A					ISTA Procedure 1A	

While every precaution has been taken to ensure accuracy and completeness in this brochure, Liebert Corporation assumes no responsibility, and disclaims all liability for damages resulting from use of this information or for any errors or omissions. © 2000 Liebert Corporation. All rights reserved throughout the world. Specifications subject to change without notice. All names referred to are trademarks or registered trademarks of their respective owners.



Liebert HIROSS UPS Headquarters
Via Gioacchino Rossini,6
20098 - S.Giuliano Milanese (MI)
tel.+39 02 982501 fax +39 02 98250273
info.ups@liebert-hiross.com

Liebert HIROSS Services Headquarters
Via Leonardo da Vinci,8
35028 - Piove di Sacco (PD)
tel.+39.049 9719111 fax +39 049 5841257
service@liebert-hiross.com

Liebert HIROSS United Kingdom
Globe Park - Marlow - Bucks - SL71YG
tel.+44 1628 403236 fax +44 1628 403294